



The Ranch Co.

Agricultural Real Estate Services Since 1965



Woodlake Residential Homesite

- Acreage:** 3.75 +/- Acres
- Location:** Less than 1/4 mile north of Ave 376 on Road 200 in Woodlake, California
- APN:** 055-040-071 - 3.75 Acres
- Road Frontage:** 326 Feet
- Improvements:** The property has a large round building on it that is previously used by “Christians in Action” camp. The structure may have other uses if remodeled. The property is being sold as is where is. Buyer to check with county on any remodeling request.
- Notes:** Lovely country setting with beautiful views of pasture land, foothills and mountains yet with direct access to main road and within 10 minutes by car to Woodlake and within 20 minutes of the shopping and business hub of Visalia.
- Future Development:** This property has been brought before the Tulare County Site Plan Review Committee for the creation of three separate parcels. Buyers to be responsible for checking with county for the details and approval process of the proposed Resolution #05-159
- Price:** \$125,000

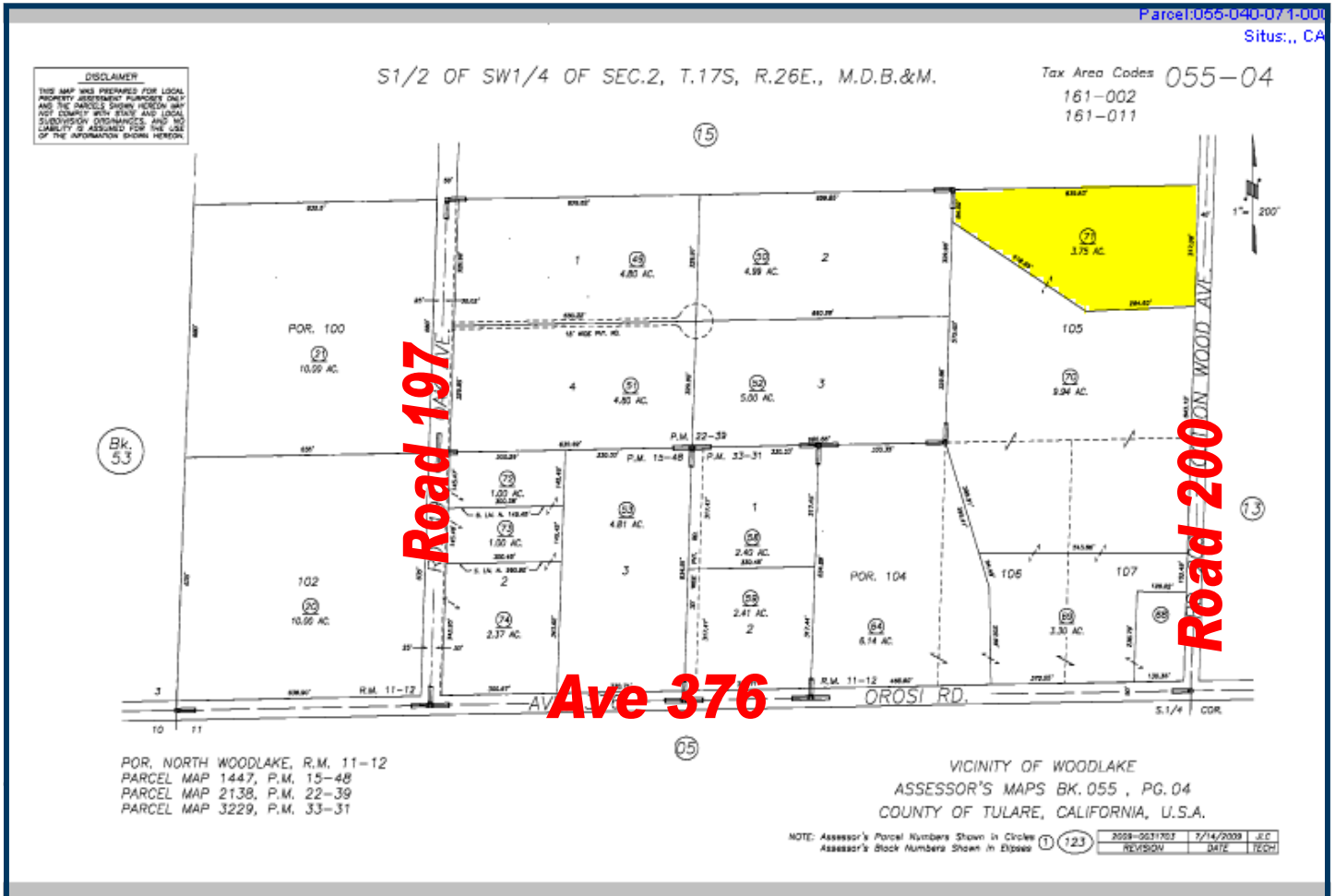


The above information has been obtained from sources deemed reliable, but not guaranteed.

3449 South Demaree Suite B • Visalia California 93277 • 559-733-3232 • Fax: 559-733-7965
8408 North Lander Avenue • Hilmar California 95324 • 209-634-8215 • Fax: 209-634-0765



Property Parcel Map



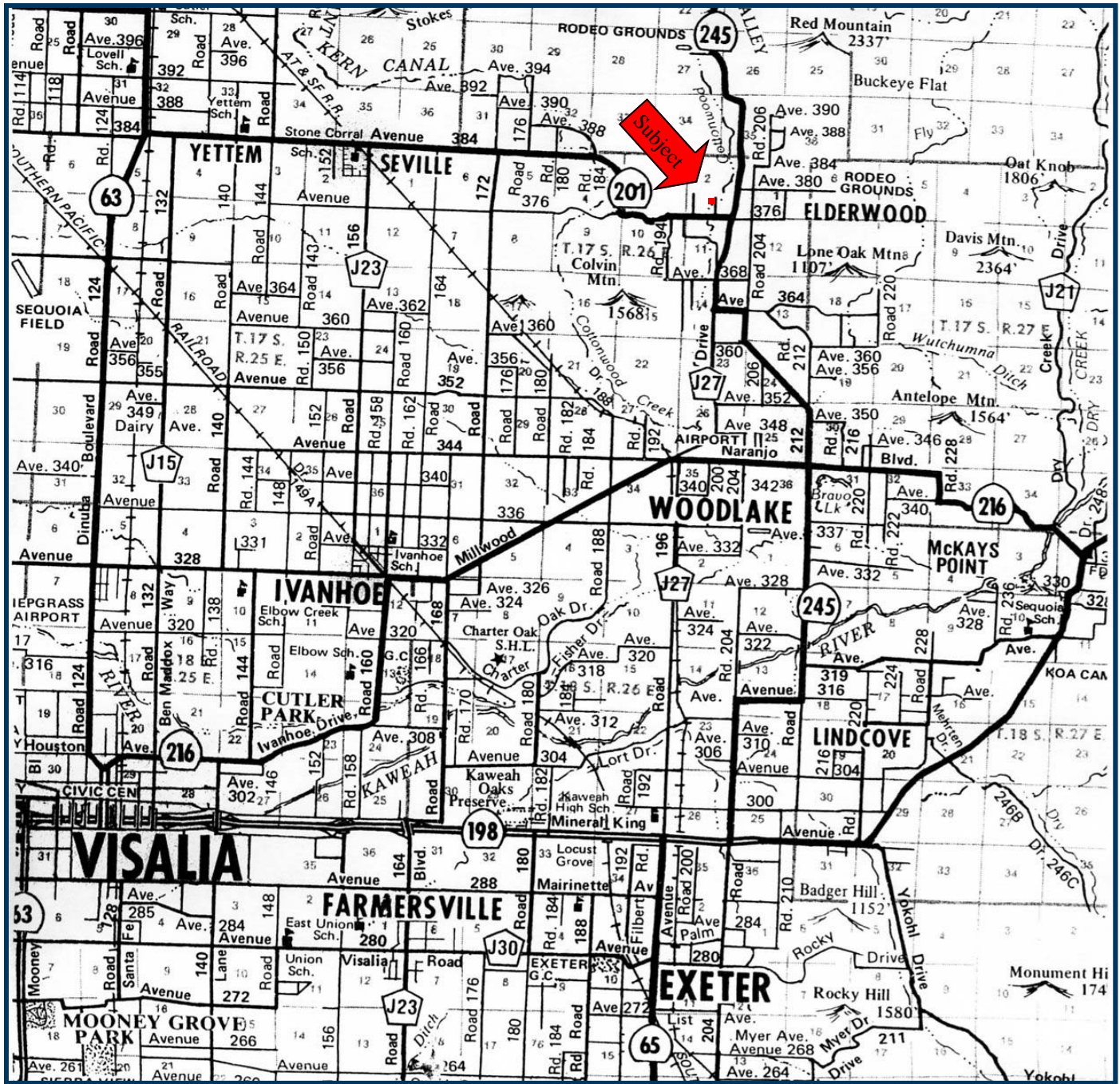
The above information has been obtained from sources deemed reliable, but not guaranteed.

3449 South Demaree Suite B • Visalia California 93277 • 559-733-3232 • Fax: 559-733-7965
8408 North Lander Avenue • Hilmar California 95324 • 209-634-8215 • Fax: 209-634-0765

www.theranchcompany.net



Location of Property



The above information has been obtained from sources deemed reliable, but not guaranteed.

3449 South Demaree Suite B • Visalia California 93277 • 559-733-3232 • Fax: 559-733-7965
8408 North Lander Avenue • Hilmar California 95324 • 209-634-8215 • Fax: 209-634-0765

www.theranchcompany.net



Aerial Photo of Property



The above information has been obtained from sources deemed reliable, but not guaranteed.

3449 South Demaree Suite B • Visalia California 93277 • 559-733-3232 • Fax: 559-733-7965
8408 North Lander Avenue • Hilmar California 95324 • 209-634-8215 • Fax: 209-634-0765

www.theranchcompany.net