



The Ranch Co.

Agricultural Real Estate Services Since 1965



West Tulare Farm Ground

70 Acres

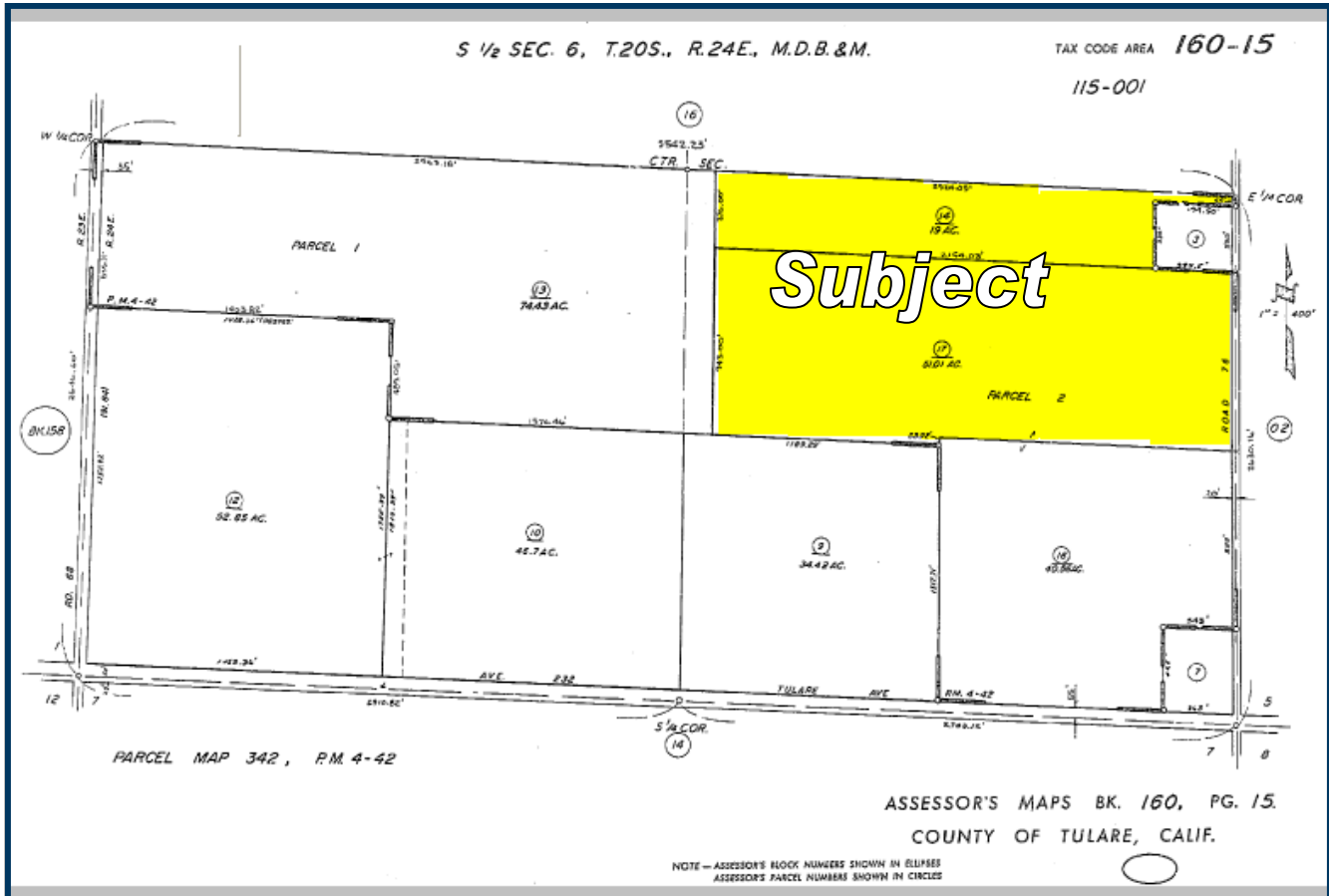
Acreage:	70.01
APN:	160-150-014 & 160-150-017
Location:	Located on Road 76 (North Palm Road) Just North of Avenue 232 (Tulare Ave.) and South of Avenue 240 (Prosperity Ave). On the West side of the road.
Soil:	Foster Sandy Loam Chino Fine Sandy Loam
Water:	Three wells (Tests available upon request) District water - Tulare Irrigation District
Improvements:	Property is laser leveled Property is pipelined with valves
Price:	\$2,120,000
Financing:	Seller will carry with 40% down

The above information has been obtained from sources deemed reliable, but not guaranteed.

3449 South Demaree Suite B • Visalia California 93277 • 559-733-3232 • Fax: 559-733-7965
8408 North Lander Avenue • Hilmar California 95324 • 209-634-8215 • Fax: 209-634-0765



Property Parcel Map

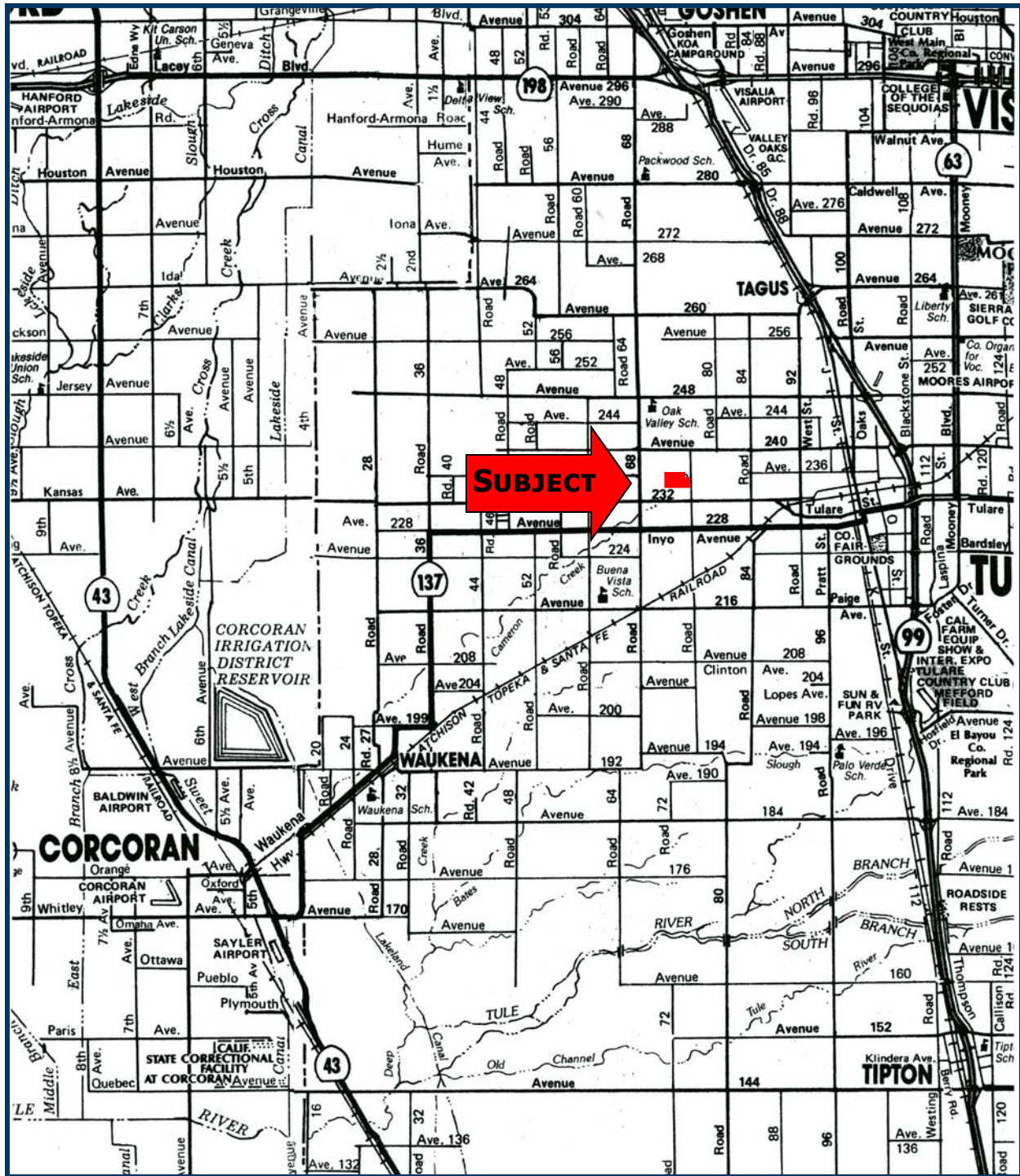


3449 South Demaree Suite B • Visalia California 93277 • 559-733-3232 • Fax: 559-733-7965
8408 North Lander Avenue • Hilmar California 95324 • 209-634-8215 • Fax: 209-634-0765

www.theranchcompany.net



Location of Property



3449 South Demaree Suite B • Visalia California 93277 • 559-733-3232 • Fax: 559-733-7965
8408 North Lander Avenue • Hilmar California 95324 • 209-634-8215 • Fax: 209-634-0765

www.theranchcompany.net



Aerial Photo of Property



3449 South Demaree Suite B • Visalia California 93277 • 559-733-3232 • Fax: 559-733-7965
8408 North Lander Avenue • Hilmar California 95324 • 209-634-8215 • Fax: 209-634-0765

www.theranchcompany.net