



The Ranch Co.

Agricultural Real Estate Services Since 1965



Stone & Siffert Hay Facility

Terra Bella, CA

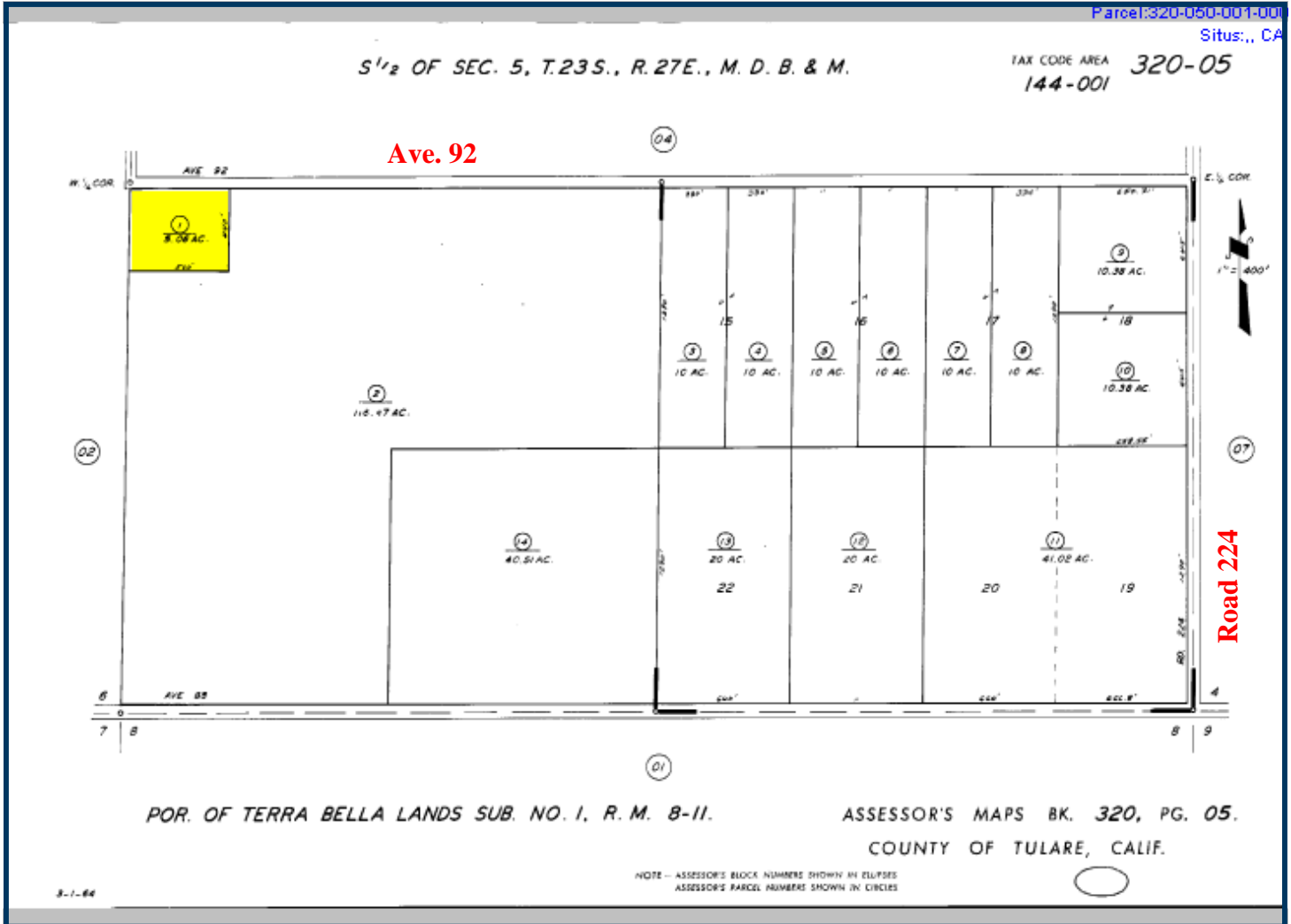
Acreage:	5.06 +/- Acres
Location:	Southeast corner of Avenue 92 and Road 216
APN:	320-050-001
Land Use:	Hay storage site with excess land devoted to dry grain/hay production
Zoning:	AE-20, Exclusive Agriculture 20-acre minimum parcel size
Soil:	AE-20, Exclusive Agriculture
Improvements:	3 hay storage barns
Notes:	Cash to seller
Price:	\$194,500

The above information has been obtained from sources deemed reliable, but not guaranteed.

3449 South Demaree Suite B • Visalia California 93277 • 559-733-3232 • Fax: 559-733-7965
8408 North Lander Avenue • Hilmar California 95324 • 209-634-8215 • Fax: 209-634-0765



Property Parcel Map



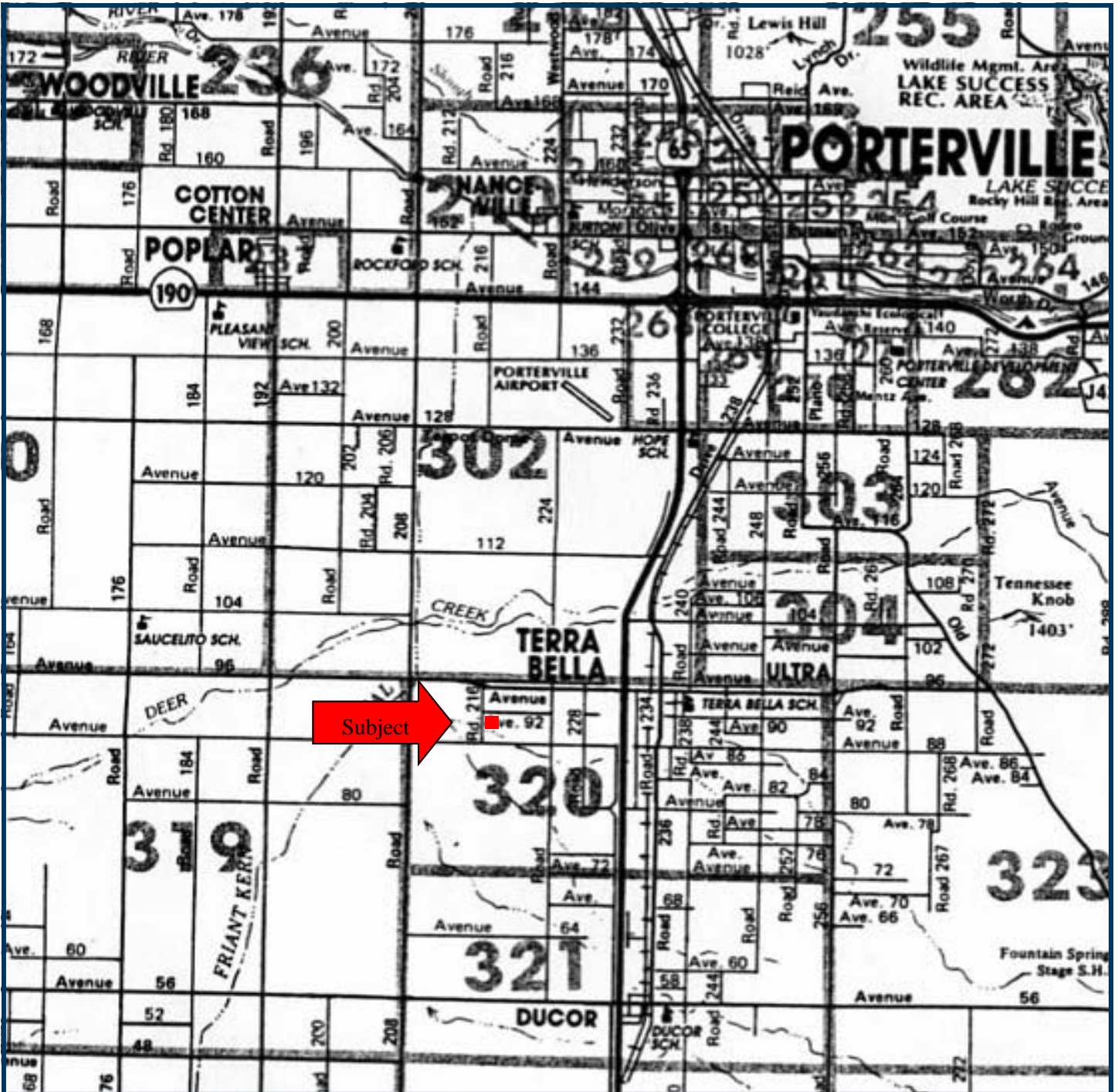
The above information has been obtained from sources deemed reliable, but not guaranteed.

3449 South Demaree Suite B • Visalia California 93277 • 559-733-3232 • Fax: 559-733-7965
8408 North Lander Avenue • Hilmar California 95324 • 209-634-8215 • Fax: 209-634-0765

www.theranchcompany.net



Location of Property



The above information has been obtained from sources deemed reliable, but not guaranteed.

3449 South Demaree Suite B • Visalia California 93277 • 559-733-3232 • Fax: 559-733-7965
8408 North Lander Avenue • Hilmar California 95324 • 209-634-8215 • Fax: 209-634-0765

www.theranchcompany.net



Aerial Photo of Property



The above information has been obtained from sources deemed reliable, but not guaranteed.

3449 South Demaree Suite B • Visalia California 93277 • 559-733-3232 • Fax: 559-733-7965
8408 North Lander Avenue • Hilmar California 95324 • 209-634-8215 • Fax: 209-634-0765

www.theranchcompany.net