



**PEARSON
REALTY**
AGRICULTURAL PROPERTIES
A Tradition in Trust Since 1919

FOR SALE

Residential Vacant Lot Zoned RM3

DESCRIPTION: This property is 6,225± SF (0.143± ac.) of residential vacant land. Potential for a duplex with several multi-unit properties in the area, permits can be obtained from the Hanford City Planning Department. The lot has alley access, utilities and is walking distance from Downtown Hanford with a walkability score of 2.5 out of 5.

LOCATION: 426 E. Elm Street, Hanford CA. The property is near the cross street of White Street.

LEGAL: Property is zoned RM3.

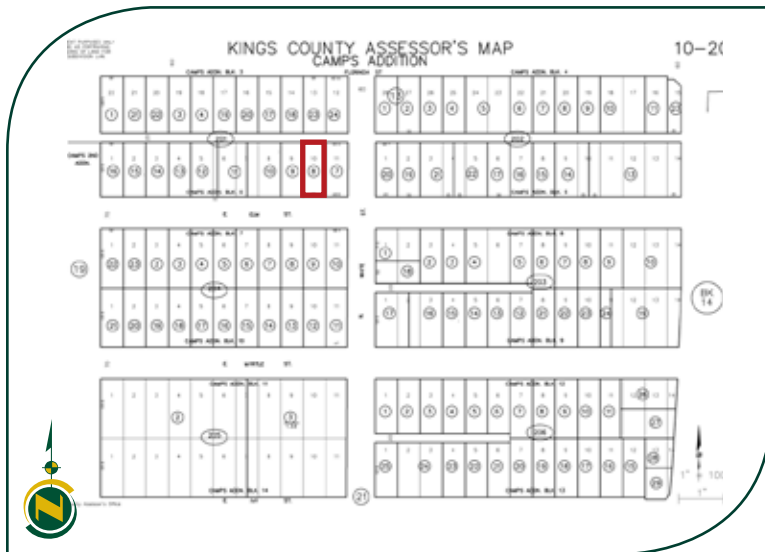
APN: 010-201-008.

PRICE: \$27,500 cash.



**0.143± Acres
Kings County, California**

**Exclusively Presented By:
Pearson Realty**



LOCATION MAP



REGIONAL MAP



Offices Serving The Central Valley

FRESNO
7480 N. Palm Ave, Ste 101
Fresno, CA 93711
559.432.6200

VISALIA
3447 S. Demaree Street
Visalia, CA 93277
559.732.7300

BAKERSFIELD
1801 Oak Street, Ste 121
Bakersfield, CA 93301
661.334.2777



**PEARSON
REALTY**
AGRICULTURAL PROPERTIES
A Tradition in Trust Since 1919

We believe the information contained herein to be correct. It is obtained from sources which we regard as reliable, but we assume no liability for errors or omissions. Policy on cooperation: All real estate licensees are invited to offer this property to prospective buyers. Do not offer to other agents without prior approval.

