



The Ranch Co.

Agricultural Real Estate Services Since 1965

Cutler Custom Home

38368 Road 132, Cutler, CA

(Sits on the South/East corner of Road 132 and Avenue 384)



Beautiful 2,500 sq. ft., well maintained home on 4.30 acres of table grapes. The 3 bedroom, 2 bath home has new dual pane vinyl windows and new attic insulation.

This is a nice home with kitchen, dining area, living room, den with cozy fireplace and a bonus room that could be an office or even a T.V. room or a child's play room.

The home has been well maintained over the years, with upkeep and maintenance as needed. The pool equipment is newer and the pressure tank on the well has also recently been upgraded. The front and back yards has new sprinkler systems, installed just last year and the septic leach lines were just replaced in 2012.

The built-in BBQ and cook-top off of the breezeway of the home adds an awesome entertainment gathering spot adjacent to the pool area.

The home has a 2-car garage with automatic openers and an abundance of built-in cabinets. The circle drive and the extra wide and deep concrete driveway provide ample parking for guests.

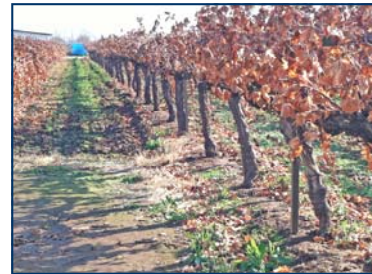
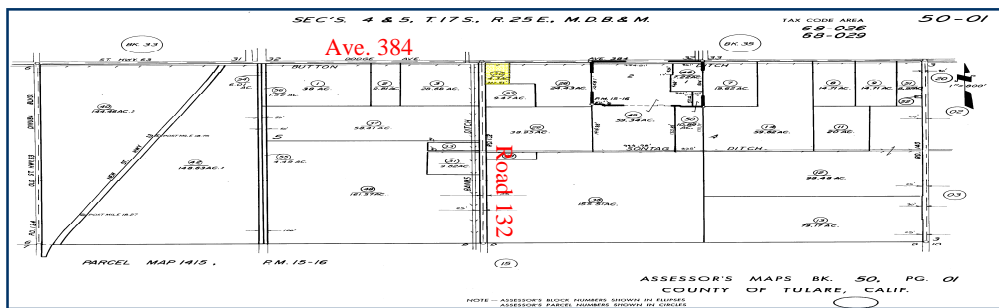
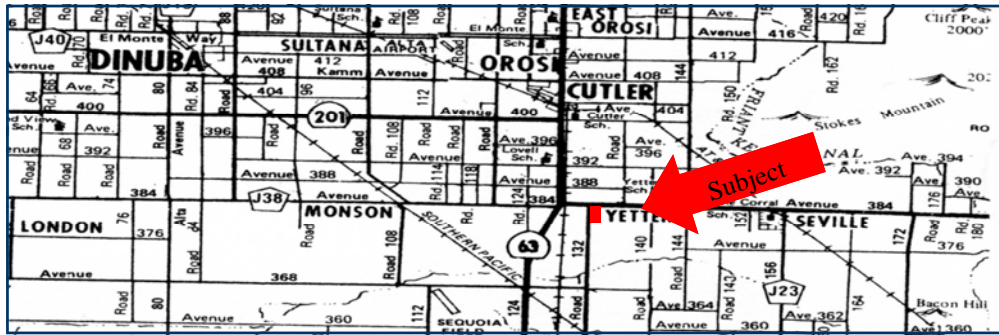
Price: \$299,000

The above information has been obtained from sources deemed reliable, but not guaranteed.

3449 South Demaree Suite B • Visalia California 93277 • 559-733-3232 • Fax: 559-733-7965
8408 North Lander Avenue • Hilmar California 95324 • 209-634-8215 • Fax: 209-634-0765



Property Maps and Photos



The above information has been obtained from sources deemed reliable, but not guaranteed.

3449 South Demaree Suite B • Visalia California 93277 • 559-733-3232 • Fax: 559-733-7965
8408 North Lander Avenue • Hilmar California 95324 • 209-634-8215 • Fax: 209-634-0765

www.theranchcompany.net