



The Ranch Co.
A Dairy Division of Pearson Realty

FOR SALE

Lemoore Pistachios



170.12± Acres
Kings County, California

Exclusively Presented By
The Ranch Co.



A Tradition in Trust since 1919

www.theranchcompany.net

CA BRE #00020875



Lemoore Pistachios

170.12± Acres

\$3,997,820

DESCRIPTION:

This property consists of 170.12± acres currently planted to pistachios. There is one metal building, one ag well, one lift pump and two domestic wells on the property. There are also 27 shares of Lemoore Canal and Irrigation Company. Neighboring parcels are currently planted to alfalfa, almonds, cotton, corn, grapes and pistachios.

LOCATION:

The property is located at 17519 Jackson Avenue. Approximately 3 miles south of Highway 198 and 2± miles east of Highway 41 in Kings County. Property is bordered between 17th Avenue to the east, 18th Avenue to the west and Jersey Avenue to the south.

LEGAL:

The property is in the Williamson Act Tax Preserve and consists of 4 parcels. APN#s 024-150-001 (79.17ac), 024-150-003 (50.71ac), 024-150-089 (20.11ac) and 024-150-090 (20.13ac), Kings County, California.

PLANTINGS:

The acreage is currently planted to Golden Hills pistachios on UCB 1 rootstock. 129.88± acres are 3rd leaf and 40.24± acres 2nd leaf with all on 19' x 17' spacing.

WATER:

Irrigation water is supplied by the use of one 200HP ag well, approximately 2,000GPM, one 10HP lift pump and one booster pump 50HP VFD. Water is distributed through a double drip line.

SOILS:

Grangeville fine sandy loam, Lemoore sandy loam, Kimberlina fine sandy loam and Cajon sandy.

PRICE/TERMS:

\$3,997,820 (\$23,500 per acre). Seller to be reimbursed for all 2018 cultural costs.

NOTES:

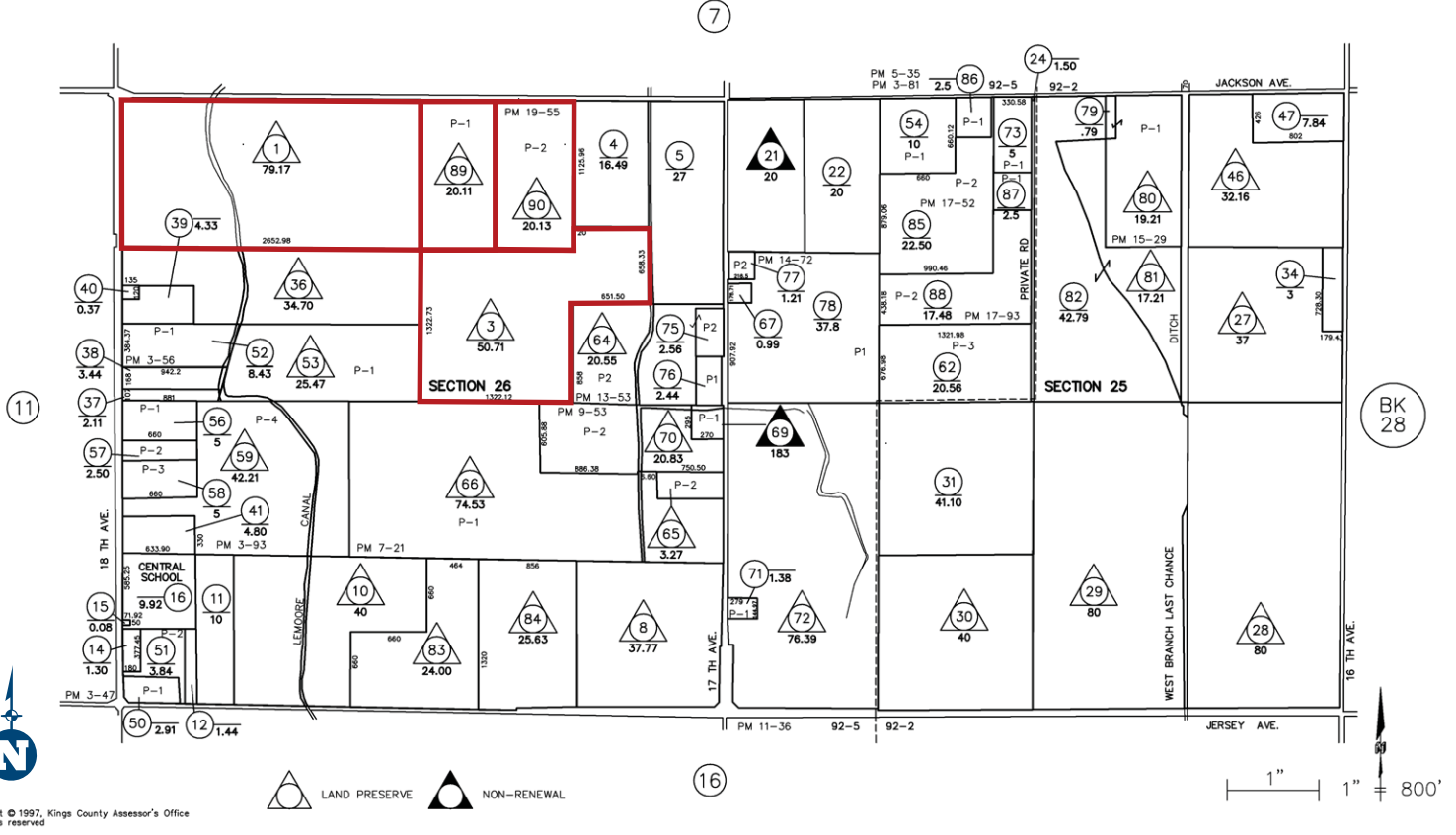
The property is sold "AS-IS" with no warranties or guarantees expressed or implied by Seller or Broker.

ASSESSOR'S PARCEL MAP

KINGS COUNTY ASSESSOR'S MAP SEC'S 25. & 26-19-20

24-15

THIS MAP IS FOR ASSESSMENT PURPOSES ONLY
IT IS NOT TO BE CONSTRUED AS PORTRAYING
LEGAL OWNERSHIP OF DIVISIONS OF LAND FOR
PURPOSES OF ZONING OR SUBDIVISION LAW.
JULY 2014

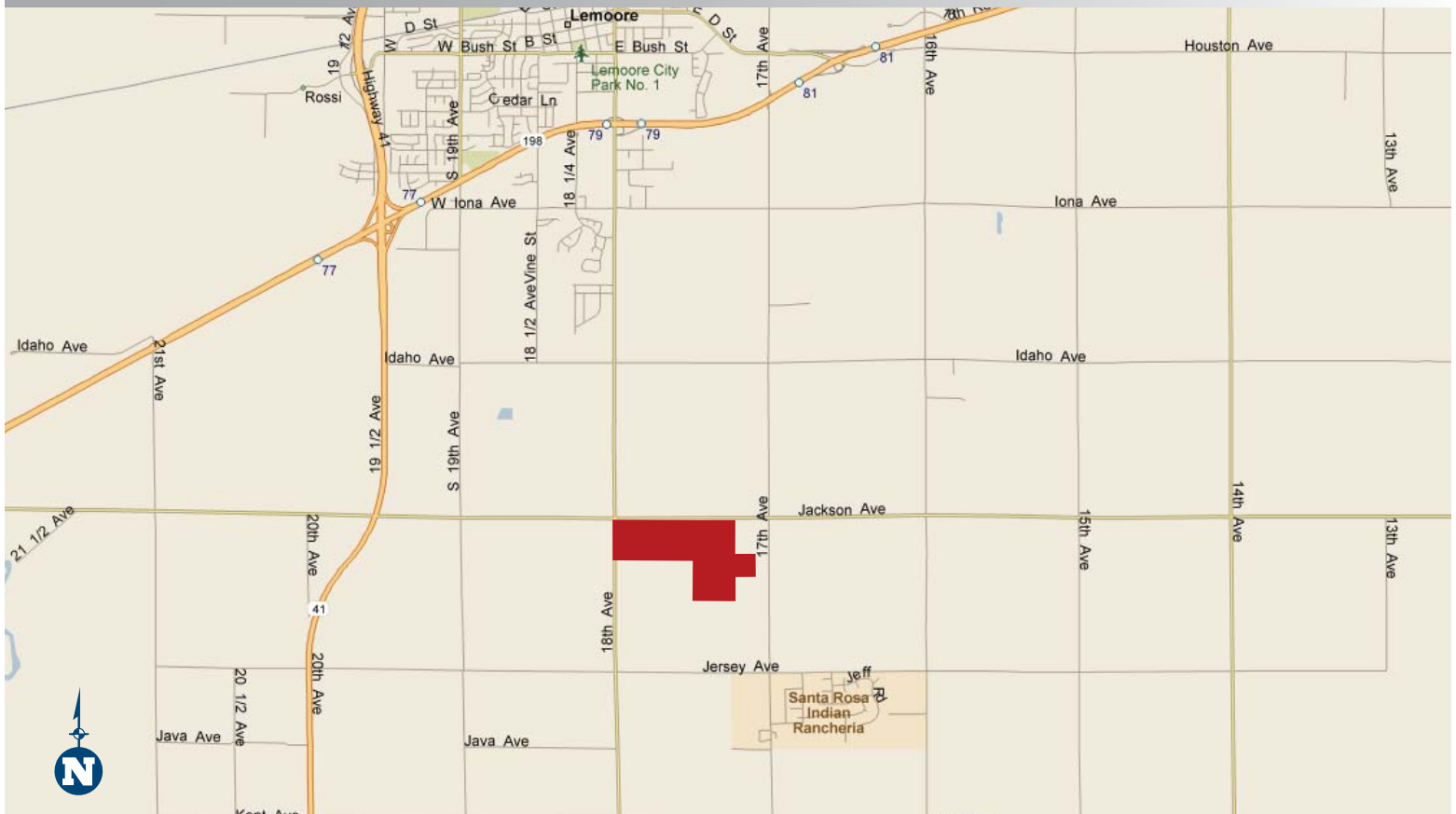


Copyright © 1997, Kings County Assessor's Office
All rights reserved

PROPERTY PHOTOS



LOCATION MAP



REGIONAL MAP



We believe the information contained herein to be correct. It is obtained from sources which we regard as reliable, but we assume no liability for errors or omissions. Policy on cooperation: All real estate licensees are invited to offer this property to prospective buyers. Do not offer to other agents without prior approval.

Offices Serving The Central Valley

FRESNO

7480 N. Palm Ave, #101
Fresno, CA 93711
559.432.6200

VISALIA

3447 S. Demaree Street
Visalia, CA 93277
559.733.3232

BAKERSFIELD

1801 Oak Street, #159
Visalia, CA 93301
661.334.2777



The Ranch Co.

A Dairy Division of Pearson Realty



Download Our
Mobile App!
<http://snap.vu/oueq>

